

Preview worksheet 1

Date: 8-2-2023

Topic: Ch.1 Angles and degree

A. Learning Objective:

1. Measure and compare the sizes of angles in degree.

B. Preview method:

(a) Identify different types of angles.

Which type of angle is each of the following angles? Fill in the blanks.

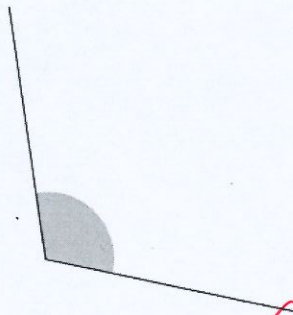
Right	Obtuse	Reflex	Acute	Round	Straight
-------	--------	--------	-------	-------	----------

Amazing!
You have good
understanding
on the comparing
the sizes of
angles.



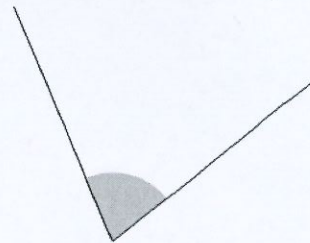
A 9-2

1.



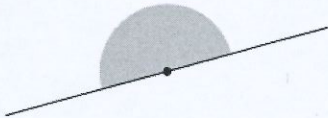
Obtuse angle

2.



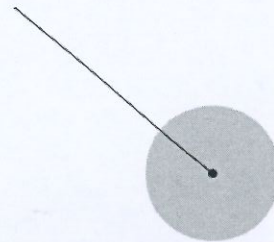
Acute angle

3.



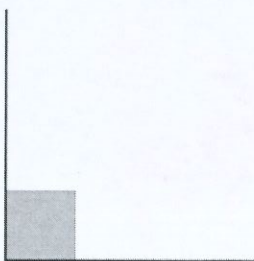
Straight angle

4.



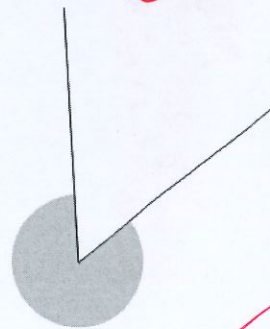
Round angle

5.



Right angle

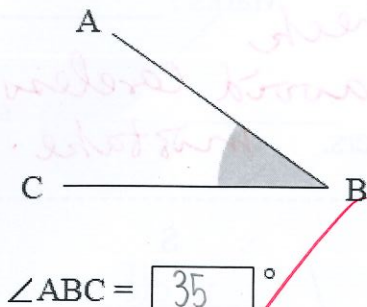
6.



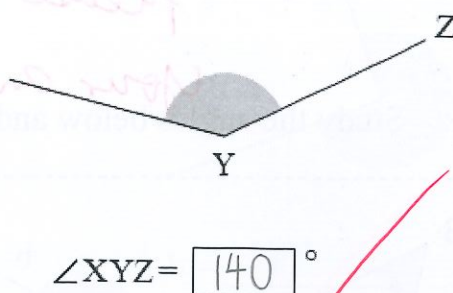
Reflex angle

(b) Measure the size of each angle below with a protractor.

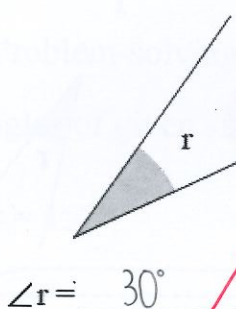
7.



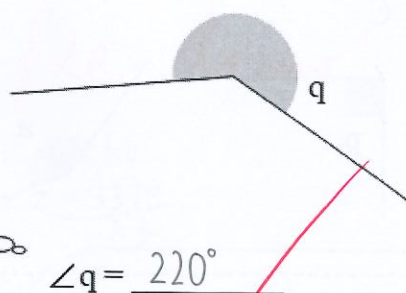
8.



9.



10.



Write the unit.



提思·學穩
Inspire Thinking
Deepen Learning

**C. Extension

1. Compare acute angle, obtuse angle, right angle, round angle, straight angle and reflex angle, which one is the largest? Why?

The largest angle is the round angle because it has 360 degree.

1) A straight angle = $\frac{180}{360}^\circ$

2) A round angle = $\frac{360}{360}^\circ$

3) A straight angle $\times \frac{2}{180} =$
A round angle

